

## Market Commentary

### Overnight global action:

On 25th June 2026, US market delivered a negative performance with S&P500 down by -3.47 pts (-0.05%), Dow Jones down by -44.51 pts (-0.09%) and Nasdaq down by -322.08 pts (-1.09%). Gift Nifty declined by -18.5 pts (-0.08%) indicating Indian markets will open negatively. Advance-Decline ratio on NSE was 1221:2052 and on BSE was 1602:2627 which showed weakness in the overall markets.

### Index Options Data Analysis:

Sensex max call OI and put OI both are at 77100 with PCR of 0.93  
Nifty max call OI and put OI both are at 24000 with PCR of 1.04  
Bank Nifty max call OI and put OI both are at 58000 with PCR of 1.17

### Securities in Ban for F&O Trade:

NIL

### Sector Performance:

NIFTY METAL index declined by -1.37% driven by National Aluminium Company Ltd. (-4.7%) and Hindustan Zinc Ltd. (-4.71%)

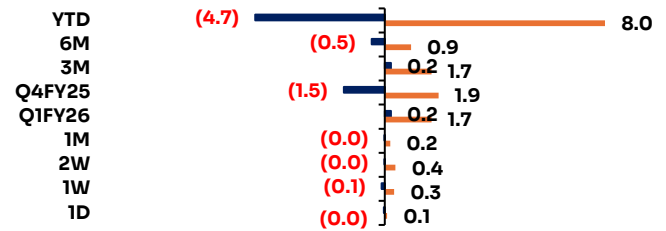
NIFTY OIL & GAS index declined by -0.87% driven by Oil & Natural Gas Corporation Ltd. (-2.9%) and Oil India Ltd. (-2.88%)

Now listen to the daily market update



Fund Flow	Buy	Sell	Net
FII/FPI	18,988	18,604	384
DII	24,844	19,096	5,748

■ Net FII (in INR Lakh Cr) ■ Net DII (in INR Lakh Cr)



Indian Indices	CMP	1D	YTD	P/E x
Gift Nifty	24,097	-0.1%	-8.3%	21.8
Sensex 30	77,100	0.1%	-9.5%	20.2
Nifty 50	24,056	0.1%	-7.9%	21.8
India VIX	13	-2.5%	37.7%	
Nifty Bank	58,177	0.1%	-2.4%	17.1
Nifty Next 50	72,200	0.2%	4.1%	72.2
Nifty 500	23,114	-0.1%	-3.2%	21.7
Nifty Mid 100	61,796	-0.6%	2.2%	31.8
Nifty Small 250	17,705	-0.5%	6.1%	29.8
USD/INR	94	0.0%	5.0%	
India 10Y	6.8%			
India 2Y	6.0%			
India 1Y	5.6%			
Bank Rate	5.8%			

Global Indices	CMP	1D	YTD	P/E x
S&P 500	7,354	-0.1%	7.4%	31.8
Dow Jones	51,876	-0.1%	7.9%	25.0
Nasdaq 100	29,118	-1.1%	15.3%	47.8
FTSE 100	10,508	-0.2%	5.8%	16.6
CAC 40	8,385	-0.6%	2.9%	24.6
DAX	24,671	-1.3%	0.7%	25.7
Nikkei 225	69,361	-4.2%	37.8%	37.0
Hang Seng	22,672	-1.8%	-11.5%	11.0
Shanghai Cor	4,027	-2.3%	1.5%	18.2
KOSPI	8,411	-5.8%	99.6%	41.6
S&P/ASX 200	8,764	0.2%	0.6%	23.1

## Stocks in the News

### **PERSISTENT SYSTEMS LTD. (CMP: 4840, MARKET CAP: 76358 Cr., SECTOR: IT - SOFTWARE)**

The company through its wholly owned German subsidiary, Galaxy Germany Holding SE, executed a Share Purchase Agreement on June 26, 2026, to acquire an initial 21% stake in Munich-headquartered Nagarro SE from Lantano Beteiligungen GmbH. Following this, the board approved a Voluntary Public Takeover Offer to acquire 100% of Nagarro SE at EUR 81 per share in an all-cash deal backed by a EUR 1.54 billion facility from Barclays. [Financial Express](#)

### **ORIENT GREEN POWER COMPANY LTD. (CMP: 11, MARKET CAP: 1260 Cr., SECTOR: POWER GENERATION/DISTRIBUTION)**

In its newly released 19th Annual Report on June 26, 2026, the renewable energy firm reported a major financial turnaround with its consolidated Profit After Tax (PAT) skyrocketing by 71.4% year-on-year to ₹72 crore in FY26 compared to ₹42 crore in FY25. Total consolidated EBITDA advanced 10% to ₹205 crore from ₹187 crore, driven by high wind turbine availability and enhanced evacuation efficiencies across its 396 MW aggregate generation portfolio. The company successfully diversified its operational base by commissioning its first 7 MW [NSE India](#)

### **INDIAN RAILWAY FINANCE CORPORATION LTD. (CMP: 92, MARKET CAP: 119943 Cr., SECTOR: FINANCE TERM LENDING)**

NSE Clearing Limited formalized the strict settlement calendar framework on June 25, 2026, to process the massive volumes originating from the institutional Offer for Sale (OFS) of the railway finance enterprise. The clearing corporation's operational blueprint sets clear margin collection and share allocation timelines to guarantee seamless institutional settlement without causing localized liquidity squeezes. The underlying cash stock is trading under close technical scrutiny as the market absorbs the additional equity float.

[NSE Clearing](#)

### **MADHUSUDAN MASALA LTD. (CMP: 213, MARKET CAP: 344 Cr., SECTOR: CONSUMER FOOD)**

The company issued an executive notice via stock exchanges on June 26, 2026, confirming the structural closure of its trading window for all designated insider personnel and immediate relatives in accordance with SEBI Prohibition of Insider Trading regulations. The suspension is linked to the upcoming board deliberation and formal finalization of the un-audited financial results for the first quarter ending June 30, 2026. This compliance measure strictly prevents speculative trading volatility and maintains information symmetry ahead of the corporate financial disclosure cycle. [NSE India](#)

Sectoral Inde	CMP	1D	YTD	P/E x
Nifty Auto	26,978	2.3%	-4.3%	22.2
Nifty IT	27,331	-0.9%	-27.9%	21.3
Nifty Fin Ser	26,771	0.1%	-3.1%	17.5
Nifty Pharma	24,970	-0.2%	9.9%	41.1
Nifty Services	30,697	-0.1%	-8.8%	33.8
Nifty Cons Du	36,338	-0.7%	-1.1%	49.2
Nifty PSE	9,954	-1.3%	1.0%	10.4
Nifty FMCG	49,419	0.7%	-10.9%	34.0
Nifty Pvt Bank	28,323	0.2%	-1.4%	10.6
Nifty PSU Banl	8,636	0.1%	1.2%	14.1
Nifty Cons	11,593	0.7%	-5.7%	41.0
Nifty Realty	826	0.3%	-5.9%	35.9
Nifty Infra	9,461	0.0%	-1.6%	22.0
Nifty Energy	39,637	-0.7%	12.2%	12.6
Nifty Health	15,963	0.1%	9.0%	38.2
Nifty India Mfg	15,925	0.3%	3.3%	29.7
Nifty Metal	12,446	-1.4%	11.4%	22.3
Nifty Oil & Gas	11,143	-0.9%	-8.9%	17.1

## Derivatives Position (Combined#)

Stock	% Chg OI	%Chg LTP
<b>Long</b>		
OFSS	15.9	1.6
INDIGO	7.4	4.1
UPL	7.0	0.5
OBEROIRLTY	6.6	3.1
ALKEM	6.5	0.2
<b>Short</b>		
IRFC	13.8	-0.9
SWIGGY	9.4	-1.4
DMART	8.9	-2.8
NATIONALUM	7.5	-1.1
POWERINDIA	6.4	0.0
<b>Long Unwinding</b>		
SAMMAANCAP	-5.0	-0.2
PGEL	-3.4	-0.1
MAXHEALTH	-2.9	-0.1
GMRAIRPORT	-2.5	-1.8
VOLTAS	-1.8	-0.8
<b>Short Covering</b>		
IREDA	-16.0	1.5
LTF	-15.0	0.3
MUTHOOTFIN	-13.0	0.1
RVNL	-12.5	3.2

**HINDUSTAN PETROLEUM CORPORATION LTD. (CMP: 409, MARKET CAP: 87007 Cr., SECTOR: REFINERIES)**

NSE Clearing Limited issued a structural operational circular on June 25, 2026, outlining the mandatory price and option strike adjustments for the company's underlying futures and options contracts effective post-holiday. The adjustment matrix accounts for the company's scheduled corporate actions to prevent artificial price dilution and maintain parity for derivatives contract holders. Option open interest profiles indicate a concentration of protective put positions ahead of the price reset, reflecting a cautious trading stance by short-term positioning desks. [NSE Clearing](#)

Commodity:	CMP	1D	YTD
Gold (\$)	4,096	1.2%	0.3%
Silver (\$)	59.2	1.5%	0.1%
Brent Oil (\$)	72.0	-4.3%	-0.2%
WTI Oil (\$)	69.2	-3.7%	-20.6%

Currency	CMP	1D	YTD
USD/INR	94.3	-0.1%	0.0%
EUR/INR	107.3	0.0%	0.1%
GBP/INR	124.5	0.0%	0.1%
JPY/INR	0.6	-0.1%	0.1%
EUR/USD	1.1	0.1%	0.1%

**Securities Lending & Borrowing Scheme (SLBS)**

Company	Under.Ltp	Fut.Ltp	Spread (%)
BAJAJHLDNG	10,625.00	10,501.00	1.17
RBLBANK	373.65	370.00	0.98
PAGEIND	40,975.00	40,650.00	0.79
APLAPOLLO	1,799.90	1,788.10	0.66
KEI	5261	5230	0.59

## 52 Week High

Stock	LTP	New 52W high	Prev 52W high	Prev 52W high date
ADANIENT	3,040	3,105	3,092	23-Jun-26
APOLLOHOSP	8,585	8,694	8,624	10-Jun-26
ABCAPITAL	397	399	393	22-Jun-26
AUROPHARMA	1,555	1,565	1,551	24-Jun-26
AEGISLOG	1,137	1,155	1,094	22-Jun-26

## 52 Week Low

Stock	LTP	New 52W low	Prev 52W low	Prev 52W low date
BSOFT	302	300	306	24-Jun-26
CSBBANK	324	322	325	16-Mar-26
RAMKY	405	401	409	24-Jun-26
SHIVALIK	214	206	207	23-Mar-26
TECHLABS	115	115	117	24-Jun-26

## Volume Shockers

Stock	Vol (000)	1W avg vol (000)	2W avg vol (000)	LTP (INR)
BANSALWIRE	4,791	115	90	315
LODHA	24,818	2,966	2,446	950
EMCURE	2,862	477	343	1,885
PIXTRANS	2,862	724	329	1,776
RELAXO	33,753	8,552	3,963	416
SAKSOFT	32,323	8,194	3,784	160
SOMICONVEY	795	203	94	114
ONWARDTEC	10,680	2,726	1,236	292
RAMCOIND	26,777	6,921	3,138	332
GNRL	3,644	963	557	102
DIVIDEND	375	100	52	35
REPCOHOME	2,397	644	333	418
FEDDERSHOL	10,231	2,829	2,270	42
MSUMI	227,892	63,133	35,560	41
LIBERTSHOE	651	181	113	269
GROWWLIQID	2,944	836	512	110
DMCC	1,014	290	178	258
TATACHEM	7,574	2,215	1,297	745
MIRZAINI	2,247	659	412	36
TVSELECT	845	251	185	502
RESPONIND	2,131	645	491	194
MODTHREAD	4	1	1	46
INDIACEM	1,777	544	323	384
BIL	91	28	15	781

## Bulk Deals

Security Name	Client Name	Buy / Sell	Qty (in 000)	Price (in 000)
ABINFRA	Arihant Capital Markets Limited	SELL	3995	12.2
AGIIL	Arihant Capital Markets Limited	BUY	1125	365.7
AGIIL	Arihant Capital Markets Limited	SELL	1179	368.6
ATALREAL	Altizen Ventures Llp	SELL	1213	30.9
ATALREAL	Altizen Ventures Llp	BUY	1289	30.9
ATALREAL	Vishal Mahesh Waghela	SELL	904	31.0
ATALREAL	Vishal Mahesh Waghela	BUY	1595	31.0
AVIENCE	Green Peaks Enterprises Llp	BUY	49	415.0
AVIENCE	Kifs Enterprise	BUY	30	395.2
AVIENCE	Neo Apex Share Broking Services Llp	BUY	50	415.0
AVIENCE	Niraj Rajnikant Shah	BUY	98	395.2
BANSALWIRE	Bnp Paribas Financial Markets	BUY	971	309.0
BANSALWIRE	Hdfc Mutual Fund	BUY	809	309.0
BANSALWIRE	Invesco Mutual Fund	BUY	2094	309.0
BANSALWIRE	Malabar India Fund Limited	BUY	809	309.0
BANSALWIRE	Mrinaal Mittal	SELL	4683	309.0
EASEMYTRIP	Parnit Ventures Private Limited	SELL	18838	7.5
EASEMYTRIP	Parnit Ventures Private Limited	BUY	18838	7.4
EMCURE	Bc Investments Iv Limited	SELL	970	1,817.0
EMCURE	Bc Investments Iv Limited	SELL	970	1,817.0
EMSLIMITED	Hrti Private Limited	BUY	286	422.6
EMSLIMITED	Hrti Private Limited	SELL	317	422.7
GCSL	Mansukh Securities & Finance Limited	SELL	130	412.0
GCSL	Mansukh Securities & Finance Limited	BUY	189	413.1
HONASA	Sofina Ventures S.A.	SELL	4178	424.1
KAYNES	Graviton Research Capital Llp	BUY	434	3,304.3
KAYNES	Graviton Research Capital Llp	SELL	434	3,304.6
LEMERITE	Sahastraa Advisors Private Limited	SELL	806	24.2
LEMERITE	Sahastraa Advisors Private Limited	BUY	806	24.2
LODHA	Fmrc Fidelity Advisor International Capital Appreciation F	BUY	13265	937.9
LODHA	Hightown Constructions Private Limited	SELL	17424	937.9
MADHUSUDAN	Vspartans Consultants Private Limited	BUY	99	209.2
MANCREDIT	Bullpulse Marketedge Private Limited	SELL	82	231.7
MANCREDIT	Bullpulse Marketedge Private Limited	BUY	109	226.0
MARKOLINES	Hi Klass Trading & Investment Limited	SELL	63	177.1
MARKOLINES	Hi Klass Trading & Investment Limited	BUY	148	174.9
MARKOLINES	Vistaar Trading Service Private Limited	BUY	148	175.3
MARKOLINES	Vistaar Trading Service Private Limited	SELL	148	175.2
MHLXMIRU	Neo Apex Venture Llp	BUY	0	122.8
MHLXMIRU	Neo Apex Venture Llp	SELL	90	115.8
MOTISONS	Arihant Capital Markets Limited	SELL	15226	14.2
MOTISONS	Arihant Capital Markets Limited	BUY	17283	14.2
MOTISONS	Hrti Private Limited	SELL	5689	14.2
MOTISONS	Hrti Private Limited	BUY	5845	14.3

Security Name	Client Name	Buy / Sell	Qty (in 000)	Price
NARMADA	Chanakya Opportunities Fund I	SELL	365	41.9
NARMADA	Sachin Govindlal Modi	SELL	198	42.3
NARMADA	Sachin Govindlal Modi	BUY	298	42.2
NARMADA	Vista Axis Vcc-Quant Fund	SELL	205	42.1
NRVANDANA	Bullpulse Marketedge Private Limited	BUY	144	69.2
NRVANDANA	Pentateam Inventure Capital Scheme I	SELL	132	68.7
ONWARDTEC	Irage Broking Services Llp	BUY	139	299.9
ONWARDTEC	Irage Broking Services Llp	SELL	144	299.1
ONWARDTEC	Junomoneta Finsol Private Limited	BUY	252	296.5
ONWARDTEC	Junomoneta Finsol Private Limited	SELL	252	296.8
ONWARDTEC	Microcurves Trading Private Limited	SELL	423	300.5
ONWARDTEC	Microcurves Trading Private Limited	BUY	423	300.0
ONWARDTEC	Nk Securities Research Private Limited	SELL	596	296.9
ONWARDTEC	Nk Securities Research Private Limited	BUY	596	296.7
ONWARDTEC	Qe Securities Llp	BUY	232	294.0
ONWARDTEC	Qe Securities Llp	SELL	233	301.7
ONWARDTEC	Silverleaf Capital Services Private Limited	BUY	273	300.1
ONWARDTEC	Silverleaf Capital Services Private Limited	SELL	273	300.2
ONWARDTEC	Two Roads Trading Private Limited	BUY	390	298.0
ONWARDTEC	Two Roads Trading Private Limited	SELL	390	298.1
ONWARDTEC	Vinsul Makardi Ltd	SELL	175	298.2
ONWARDTEC	Vinsul Makardi Ltd	BUY	175	298.0
PIXTRANS	Microcurves Trading Private Limited	SELL	112	1,820.2
PIXTRANS	Microcurves Trading Private Limited	BUY	112	1,818.0
PIXTRANS	Nk Securities Research Private Limited	SELL	195	1,808.6
PIXTRANS	Nk Securities Research Private Limited	BUY	195	1,807.3
PIXTRANS	Qe Securities Llp	SELL	72	1,801.7
PIXTRANS	Qe Securities Llp	BUY	72	1,808.0
RAMCOIND	Irage Broking Services Llp	SELL	544	343.9
RAMCOIND	Irage Broking Services Llp	BUY	617	344.2
RAMCOIND	Junomoneta Finsol Private Limited	SELL	724	344.4
RAMCOIND	Junomoneta Finsol Private Limited	BUY	733	344.3
RAMCOIND	Microcurves Trading Private Limited	SELL	967	344.8
RAMCOIND	Microcurves Trading Private Limited	BUY	967	344.6
RAMCOIND	Nk Securities Research Private Limited	SELL	855	341.3
RAMCOIND	Nk Securities Research Private Limited	BUY	855	341.1
RAMCOIND	Qe Securities Llp	BUY	927	344.9
RAMCOIND	Qe Securities Llp	SELL	934	341.1
RAMCOSYS	Dipan Mehta Commodities Private Limited	BUY	186	710.4
RAMCOSYS	Dipan Mehta Commodities Private Limited	SELL	192	711.4
RAMCOSYS	Elixir Wealth Management Private Limited	SELL	266	711.8
RAMCOSYS	Elixir Wealth Management Private Limited	BUY	269	712.0
RAMCOSYS	Grt Strategic Ventures Llp	BUY	216	708.3
RAMCOSYS	Grt Strategic Ventures Llp	SELL	216	708.6
RAMCOSYS	Hrti Private Limited	BUY	413	706.8
RAMCOSYS	Hrti Private Limited	SELL	432	705.5
RAMCOSYS	Irage Broking Services Llp	BUY	324	709.7

RAMCOSYS	Irage Broking Services Llp	SELL	345	706.4
RAMCOSYS	Jump Trading Financial India Private Limited	SELL	216	706.8
RAMCOSYS	Jump Trading Financial India Private Limited	BUY	216	705.3
RAMCOSYS	Junomoneta Finsol Private Limited	SELL	697	708.2
RAMCOSYS	Junomoneta Finsol Private Limited	BUY	697	707.9
RAMCOSYS	Marwadi Chandarana Intermediaries Brokers Private Limit	BUY	246	705.5
RAMCOSYS	Marwadi Chandarana Intermediaries Brokers Private Limit	SELL	256	706.7
RAMCOSYS	Microcurves Trading Private Limited	SELL	1075	710.6
RAMCOSYS	Microcurves Trading Private Limited	BUY	1075	710.1
RAMCOSYS	Musigma Securities	SELL	328	706.5
RAMCOSYS	Musigma Securities	BUY	328	707.3
RAMCOSYS	Nk Securities Research Private Limited	BUY	502	709.9
RAMCOSYS	Nk Securities Research Private Limited	SELL	503	710.3
RAMCOSYS	Qe Securities Llp	BUY	420	708.6
RAMCOSYS	Qe Securities Llp	SELL	422	706.1
RAMCOSYS	Silverleaf Capital Services Private Limited	BUY	198	706.7
RAMCOSYS	Silverleaf Capital Services Private Limited	SELL	198	707.2
RATNAVEER	Arihant Capital Markets Limited	SELL	1335	188.6
RATNAVEER	Arihant Capital Markets Limited	BUY	1335	188.7
RATNAVEER	Hrti Private Limited	BUY	440	185.3
RATNAVEER	Hrti Private Limited	SELL	460	187.1
RATNAVEER	Mathisys Quantcap Llp	BUY	344	188.2
RATNAVEER	Mathisys Quantcap Llp	SELL	346	187.3
RATNAVEER	Qe Securities Llp	BUY	300	187.8
RATNAVEER	Qe Securities Llp	SELL	357	186.4
RBA	Hrti Private Limited	BUY	1043	80.0
RBA	Hrti Private Limited	SELL	2937	80.2
RBA	Monet Securities Private Ltd	BUY	4000	80.2
RBA	Unity Associates	SELL	3000	80.2
RELAXO	Microcurves Trading Private Limited	SELL	1298	413.1
RELAXO	Microcurves Trading Private Limited	BUY	1298	413.0
ROTO	Hrti Private Limited	SELL	1496	76.3
ROTO	Hrti Private Limited	BUY	1769	76.0
ROTO	Junomoneta Finsol Private Limited	SELL	2686	76.1
ROTO	Junomoneta Finsol Private Limited	BUY	2705	76.1
ROTO	Microcurves Trading Private Limited	BUY	976	76.2
ROTO	Microcurves Trading Private Limited	SELL	976	76.2
ROTO	Qe Securities Llp	SELL	1686	75.6
ROTO	Qe Securities Llp	BUY	1695	76.2
SAKSOFT	Blitzquant Research Llp	BUY	1096	158.7
SAKSOFT	Blitzquant Research Llp	SELL	1096	158.8
SAKSOFT	Junomoneta Finsol Private Limited	SELL	708	159.0
SAKSOFT	Junomoneta Finsol Private Limited	BUY	709	158.9
SAKSOFT	Microcurves Trading Private Limited	SELL	1373	160.1
SAKSOFT	Microcurves Trading Private Limited	BUY	1373	160.0
SAKSOFT	Nk Securities Research Private Limited	BUY	1426	159.7
SAKSOFT	Nk Securities Research Private Limited	SELL	1426	159.8
SAKSOFT	Qe Securities Llp	BUY	756	158.7
SAKSOFT	Qe Securities Llp	SELL	765	156.8
SAKSOFT	Silverleaf Capital Services Private Limited	BUY	756	157.7
SAKSOFT	Silverleaf Capital Services Private Limited	SELL	756	157.7

## Block Deals

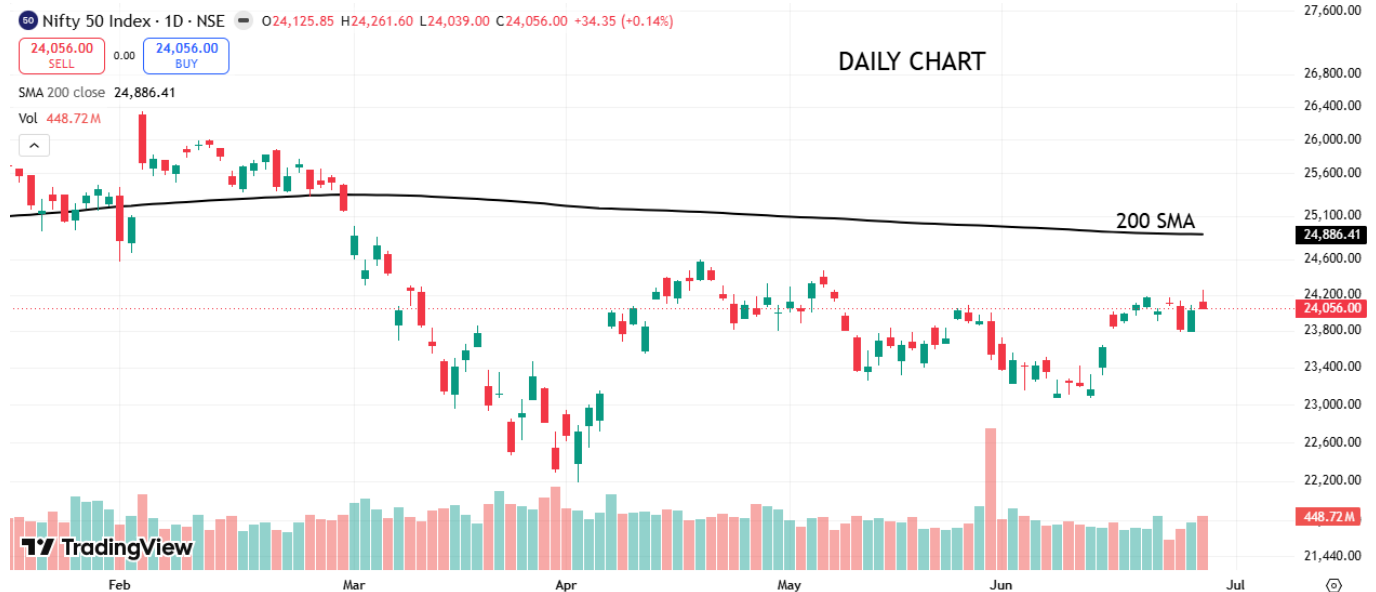
Security Name	Client Name	Buy / Sell	Qty (in 000)	Price
BANSALWIRE	BNP PARIBAS FINANCIAL MARKETS	BUY	9,70,874	309.0
BANSALWIRE	HDFC MUTUAL FUND	BUY	8,09,063	309.0
BANSALWIRE	INVESCO MUTUAL FUND	BUY	20,93,917	309.0
BANSALWIRE	MALABAR INDIA FUND LIMITED	BUY	8,09,062	309.0
BANSALWIRE	MRINAAL MITTAL	SELL	46,82,916	309.0
EMCURE	ADITYA BIRLA SUN LIFE MUTUAL FUND	BUY	2,61,420	1,817.0
EMCURE	ALPHA ALTERNATIVES EQUITY ABSOLUTE RETURN FUND	BUY	1,37,593	1,817.0
EMCURE	AXIS MUTUAL FUND	BUY	1,37,590	1,817.0
EMCURE	AXIS MUTUAL FUND	BUY	1,37,591	1,817.0
EMCURE	BC INVESTMENTS IV LIMITED	SELL	9,69,730	1,817.0
EMCURE	BC INVESTMENTS IV LIMITED	SELL	9,69,729	1,817.0
EMCURE	BNP PARIBAS FINANCIAL MARKETS	BUY	1,37,592	1,817.0
EMCURE	GOLDMAN SACHS INVESTMENTS MAURITIUS I LIMITED	BUY	1,37,590	1,817.0
EMCURE	HDFC STANDARD LIFE INSURANCE COMPANY LTD	BUY	5,56,954	1,817.0
EMCURE	HSBC MUTUAL FUND	BUY	1,37,590	1,817.0
EMCURE	MORGAN STANLEY ASIA SINGAPORE PTE	BUY	1,37,590	1,817.0
LODHA	FIAM INTERNATIONAL CAPITAL APPRECIATION COMMIN	BUY	1,55,600	937.9
LODHA	FIDELITY INVESTMENT TRUST FIDELITY INTERNATIONAL	BUY	17,10,100	937.9
LODHA	FIDELITY INSTITUTIONAL AM INTERNATIONAL CORE CIT	BUY	8,94,596	937.9
LODHA	FIDELITY RUTLAND SQUARE TRUST II:	BUY	1,00,800	937.9
LODHA	FMRC FIDELITY ADVISOR INTERNATIONAL CAPITAL APPR	BUY	1,32,64,600	937.9
LODHA	FRST II STRAT ADV FIDE INTERL FUND	BUY	28,57,100	937.9
LODHA	HIGHTOWN CONSTRUCTIONS PRIVATE LIMITED	SELL	1,74,24,032	937.9
LODHA	HEMOCRAFT DEVELOPERS AND FARMS PRIVATE LIMITED	SELL	24,57,264	937.9
LODHA	SUNAMERICA SERIES TRUST SA FIDELITY INSTITUTIONAI	BUY	1,78,300	937.9
LODHA	VIP INTL CAP APP PORT	BUY	7,20,200	937.9

## Event Calendar – Corporate Action (Financial Results/ Dividend/other business matters)

Company	Purpose
A2Z Infra Engineering Limited	Financial Result
Ajooni Biotech Limited	Fund Raising/Other business matters
Hindustan Aeronautics Limited	Dividend
SIS LIMITED	Buyback
Shree Ram Proteins Limited	Financial Result
Viceroy Hotels Limited	Fund Raising/O
Yes Bank Limited	Fund Raising

## Nifty Spot – Pivot Levels 29/06/2026

	Closing	Support			Resistance		
		1	2	3	1	2	3
<b>Nifty</b>	<b>24056</b>	<b>23976</b>	<b>23896</b>	<b>23754</b>	<b>24198</b>	<b>24340</b>	<b>24420</b>



Previous week it was mentioned that, **Our view is Buy on Dips & below 23817 traders should use 23487–(22600–21715) levels as an opportunity to buy. If the trend is strong Nifty will bounce back from 22600 levels, any close below should be treated as negative for the current uptrend. Currently, (24410–24780)–25080–(25380–25810) as sell areas. If sustain above 25810 we open for 26347 and later further to 26500–26700 area.**

**Nifty continued its upward momentum with the formation of Up Gaps and rallied to a high of 24168.05. However, resistance near the previous week's high of 24189.25 restricted further upside, resulting in a valid corrective move. The correction extended as the index breached 23817 levels & further declined to mark a low of 23784.95. Subsequently, buying interest emerged from lower levels, leading to a recovery. Nifty regained momentum and rallied to a high of 24261.60, reflecting strength in the ongoing up move. Now, Nifty closed at 24056.**

Below 23784.95 (current week low), we have support levels at 23487–(22600–21715) as bounce back levels. If the trend is strong Nifty will bounce back from 22600 levels, any close below should be treated as negative for the current uptrend.

As of now, (24391–24765)–25066–(25370–25800) as sell level areas.

If sustain above 25800 we open for 26347 and later further to 26500–26700 area.

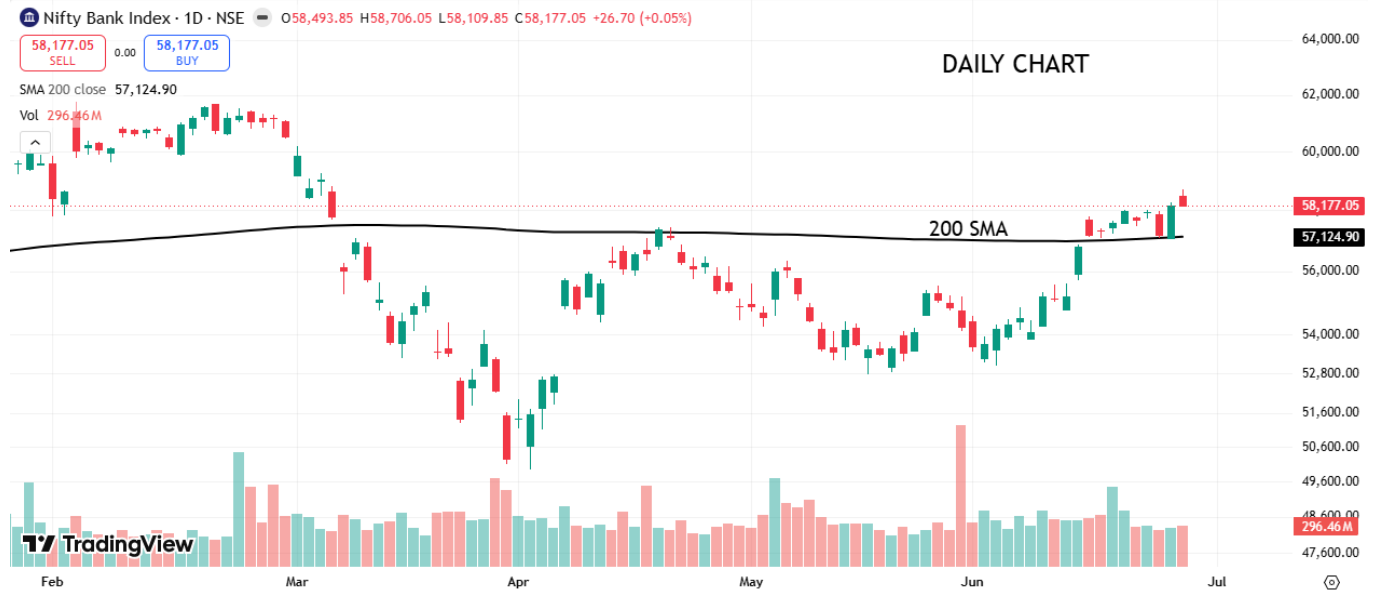
**Our view is Buy on Dips & below 23784 traders should use 23487–(22600–21715) levels as an opportunity to buy. If the trend is strong Nifty will bounce back from 22600 levels, any close below should be treated as negative for the current uptrend. Currently, (24391–24765)–25066–(25370–25800) as sell areas. If sustain above 25800 we open for 26347 and later further to 26500–26700 area.**

The 200 SMA is at 24886.41.

All the calls/opinions are subject to Disclosures and Disclaimer <http://goo.gl/8bCMYQ>

## Bank Nifty Spot – Pivot Levels 29/06/2026

	Closing	Support			Resistance		
		1	2	3	1	2	3
Bank Nifty	58177.05	57955	57733	57358	58552	58927	59149



Previous week it was mentioned, **Our view is Buy on Dips & below 57076 traders should use (55780-53930)-(52072-49430) levels as an opportunity to buy. If the trend is strong Bank Nifty will bounce back from 53920 levels, any close below should be treated as negative for the current uptrend. Currently, (58180-58870)-59420-(59980-60760) as sell level areas. If sustain above 60760 we open for 61765 and later further to (62540-63470) area.**

**Bank Nifty opened at 57906.90 and later witnessed a corrective move, declining to mark a low of 57074.90. However, the index found support near the 200 SMA, indicating buying interest at lower levels. Thereafter, Bank Nifty staged a strong recovery and rallied to mark a high of 58706.05, reflecting strength in the ongoing up move. The sustained move above support levels & the sharp rebound from the 200 SMA suggest positive momentum, with buyers maintaining control at lower levels. Now, Bank Nifty closed at 58177.05.**

Below 57074 (current week low), we have support levels at (55780-53920)-(52072-49430) as bounce back levels. If the trend is strong Bank Nifty will bounce back from 53920 levels, any close below should be treated as negative for the current uptrend.

As of now, (58180-58870)-59420-(59980-60760) as sell level areas.

If sustain above 60760 we open for 61765 and later further to (62540-63470) area.

**Our view is Buy on Dips & below 57074 traders should use (55780-53930)-(52072-49430) levels as an opportunity to buy. If the trend is strong Bank Nifty will bounce back from 53920 levels, any close below should be treated as negative for the current uptrend. Currently, (58180-58870)-59420-(59980-60760) as sell level areas. If sustain above 60760 we open for 61765 and later further to (62540-63470) area.**

The 200 SMA is at 57124.90.

All the calls/opinions are subject to Disclosures and Disclaimer <http://goo.gl/8bCMYQ>

## Talbro Automotive Components Limited – Technical Stock Call – 25/06/2026

Technical Stock Call	Action	Reco	Target	Support	SL
TALBROAUTO	BUY	406.5	700	(393-371)-352-(334-324)	290



TradingView

Primary move in stock commenced from 77 (March 2023). Trading above averages, Uptrend continued, and the stock reached a high of 347 (NOV 2023). Profit booking followed and the stock corrected to 220 (March 2024). The stock took support of the averages and bounced back reaching a NEW high of 396 (JULY 2024). Lower tops were formed & Profit booking followed.

The stock gave a valid correction making a low of 200 (MARCH 2025) but higher bottom formation.

The stock traded in a range from Dec 2024 to May 2026. The stock took support of 200 SMA.

Recently after forming several positive price candles the stock has given a Range Triangle Breakout supported by volumes reaching a high of 430 which is above all previous swing High.

William % R, MACD & Aroon UP Down indicators suggest Positive uptrend.

Probability of Further Up Move is very high.

Target of **700** is expected with lower support levels **(393-371)-352-(334-324)** in case of intermediate fall.

A stop loss at **290** is to be followed for the trade.

All the calls/opinions are subject to Disclosures and Disclaimer

<http://goo.gl/8bCMyQ>

Global Macro Events (29th June 2026)		
Event	Previous	Forecasted
<b>India</b>		
Industrial Production YoY MAY	0.049	0.042
Manufacturing Production YoY MAY	0.062	0.052
<b>USA</b>		
Dallas Fed Manufacturing Index JUN	0.4	2
3-Month Bill Auction	0.03695	
6-Month Bill Auction	0.0384	
<b>China</b>		
<b>Great Britain</b>		
BoE Pill Speech		
BoE Consumer Credit MAY	£1.859B	£1.8B
Mortgage Approvals MAY	65.94K	65.4K
Mortgage Lending MAY	£4.37B	£4.7B
M4 Money Supply MoM MAY	0.002	0.003
Net Lending to Individuals MoM MAY	£6.2B	£6.1B
<b>Germany</b>		

## ##STOCK SPECIFIC NEWS

**Persistent Systems** The company through its wholly owned German subsidiary, Galaxy Germany Holding SE, executed a Share Purchase Agreement on June 26, 2026, to acquire an initial 21% stake in Munich-headquartered Nagarro SE from Lantano Beteiligungen GmbH. Following this, the board approved a Voluntary Public Takeover Offer to acquire 100% of Nagarro SE at EUR 81 per share in an all-cash deal backed by a EUR 1.54 billion facility from Barclays. The strategic cross-border transaction expands its European footprint from 9% to 22% of revenue and creates a combined global AI-driven engineering entity with a \$2.9 billion revenue run-rate. [Financial Express](#)

**Orient Green Power Company** In its newly released 19th Annual Report on June 26, 2026, the renewable energy firm reported a major financial turnaround with its consolidated Profit After Tax (PAT) skyrocketing by 71.4% year-on-year to ₹72 crore in FY26 compared to ₹42 crore in FY25. Total consolidated EBITDA advanced 10% to ₹205 crore from ₹187 crore, driven by high wind turbine availability and enhanced evacuation efficiencies across its 396 MW aggregate generation portfolio. The company successfully diversified its operational base by commissioning its first 7 MW solar project, with an additional 18 MW solar expansion actively tracking completion by September 2026 under a newly upgraded credit rating of BBB-. [NSE India](#)

**DCM Shriram Chemicals** The management announced on June 26, 2026, that its specialized chemical manufacturing unit located at Jhagadia has been officially inducted into the World Economic Forum's Global Lighthouse Network. This milestone underscores successful implementation of advanced fourth industrial revolution technologies, including machine learning-driven process control and predictive asset maintenance. The structural automation is projected to optimize overall plant operational efficiency by 15-18%, driving margin expansion across the chlor-alkali segment and mitigating sudden raw material price shocks. [India IPO Daily](#)

**Aakash Educational Services** Global lenders holding debt obligations tied to the parent entity have formally proposed a restructuring resolution on June 27, 2026, to acquire a direct 30% equity stake in the subsidiary, valuing the test-prep business at approximately \$2 billion. The proposal is designed to permanently settle protracted legal and financial disputes involving founder Byju Raveendran and safeguard the operational cash flows of the coaching institutional chain. Analysts indicate that separating the highly profitable brick-and-mortar operations from online asset liabilities will stabilize credit profiles and lay the groundwork for an independent public listing. [India IPO Daily](#)

**Madhusudan Masala** The company issued an executive notice via stock exchanges on June 26, 2026, confirming the structural closure of its trading window for all designated insider personnel and immediate relatives in accordance with SEBI Prohibition of Insider Trading regulations. The suspension is linked to the upcoming board deliberation and formal finalization of the un-audited financial results for the first quarter ending June 30, 2026. This compliance measure strictly prevents speculative trading volatility and maintains information symmetry ahead of the corporate financial disclosure cycle. [NSE India](#)

**CSM Technologies** The mainboard primary offering concluded its subscription rounds on June 27, 2026, as part of a massive institutional capital rush that successfully pooled over ₹2,000 crore across twelve concurrent mainboard and SME initial public offerings. Strong non-institutional and qualified institutional buyer subscription metrics indicate structural depth in the domestic software-as-a-service and enterprise technology consulting verticals. The net proceeds are earmarked for deep-tech research centers, expanding cloud infrastructure deployment, and scaling sales footprints across Middle Eastern and Southeast Asian geographic clusters. [India IPO Daily](#)

**Advit Jewels** The company successfully wrapped up its initial public capital raise on June 27, 2026, leveraging robust retail liquidity to anchor its next leg of regional retail boutique footprint expansion. The capital structure optimization will allocate net primary proceeds toward reducing working capital debt and securing long-term gold bullion inventory at favorable hedging rates. Market participants anticipate strong listing premium traction on the SME platform given the company's superior return on equity profile relative to regional unlisted peers.

[India IPO Daily](#)

**Waterways Leisure Tourism** The enterprise finalized its equity book-building process on June 27, 2026, amidst heightened primary market velocity that generated widespread institutional appetite for premium hospitality and domestic luxury cruise operators. Capital deployment will focus heavily on adding maritime fleet capacities and building out proprietary luxury coastal experiential packages across key Indian tourist routes. The business model positions the firm to capture premium consumer discretionary spend, which is currently scaling faster than mass-market hospitality segments. [India IPO Daily](#)

**AllHome** The building materials B2B startup, founded by the executive co-founders of PharmEasy, secured ₹200 crore in a crucial Series B funding round on June 27, 2026, led by Bessemer Venture Partners and Strides. The fresh equity injection will be deployed to expand its digital supply chain logistics network, establish localized distribution hubs, and integrate advanced enterprise resource procurement tools for small contractors. The capital raise signals continued venture interest in technology-enabled construction tech platforms capable of formalizing fragmented material procurement channels. [India IPO Daily](#)

**Retner.ai** The e-commerce intent intelligence platform announced on June 27, 2026, that it has successfully closed its latest strategic funding round backed by Growth Sense Venture Fund to scale operations globally. The fresh capital injection will be directly utilized to enhance its proprietary natural language processing engine and automate multi-channel buyer communication structures for digital brands. By driving high-precision customer engagement metrics, the platform aims to capture market share within the rapidly expanding automated enterprise communications vertical. [India IPO Daily](#)

**Zave** The intelligent digital shopping assistant platform secured ₹4.7 crore in a bridge financing round on June 27, 2026, anchored primarily by Inflection Point Ventures. Management will target capital deployment toward optimizing its machine learning recommendation engine, improving cloud infrastructure scalability, and acquiring user bases across tier-2 and tier-3 regional markets. The bridge round ensures comfortable short-term cash runways as the technology architecture prepares for a larger institutional Series A round. [India IPO Daily](#)

**Uber India** The ride-hailing company's country chief officially resigned from his corporate leadership role on June 27, 2026, to transition into heading OpenAI's expanding domestic operations within India. This high-profile management exit underscores the accelerating talent war among leading technology companies aiming to capture the Indian generative AI market. The structural departure requires Uber to rapidly align its regional executive layer to protect its dominant mobility and fleet market share against aggressive domestic competitors. [India IPO Daily](#)

**Vodafone Idea** The telecom operator witnessed an aggressive 80% equity rally over a three-month trailing window leading up to June 26, 2026, prompted by continuous vendor debt settlements and structural 4G/5G capital expenditure execution. Market analysts remain divided on the long-term sustainability of the move, with technical indicators reflecting heavily overbought conditions while structural upgrades to Average Revenue Per User provide fundamental support. Close monitoring of subscriber retention numbers over the next quarter is critical to confirm if operational cash flows can support heavy spectrum payout liabilities. [Economic Times](#)

**Hindustan Petroleum Corporation Limited** NSE Clearing Limited issued a structural operational circular on June 25, 2026, outlining the mandatory price and option strike adjustments for the company's underlying futures and options contracts effective post-holiday. The adjustment matrix accounts for the company's scheduled corporate actions to prevent artificial price dilution and maintain parity for derivatives contract holders. Option open interest profiles indicate a concentration of protective put positions ahead of the price reset, reflecting a cautious trading stance by short-term positioning desks. [NSE Clearing](#)

**Mphasis Limited** The derivatives clearing wing of the National Stock Exchange formalized the adjustment parameters for the company's futures and options contracts on June 25, 2026, to neutralize corporate action impacts. The adjustment involves a mathematical recalculation of option strikes and market lot sizes to maintain structural contract value equilibrium. Traders are factoring the adjusted position limits into their quantitative algorithmic models to manage slippage and tracking error risks during the initial post-holiday trading block. [NSE Clearing](#)

**Multi-Commodity Exchange of India** In an operational notice issued for the holiday block on June 26, 2026, the country's primary commodity bourse executed a planned split-session structure, keeping its morning window shut while reopening the evening session from 5:00 PM to 11:30 PM. The tactical evening resumption ensured that domestic bullion, energy, and base metal contract prices remained locked in alignment with global trading desks operating in Europe and North America. The volume mix saw a spike in crude oil and gold options, indicating robust hedging participation by commercial trading desks despite the localized equity holiday. [Economic Times](#)

**National Commodity & Derivatives Exchange Limited** Unlike its energy-heavy counterpart, the agri-focused exchange implemented a non-negotiable full-day suspension of all trading operations on June 26, 2026, for Muharram. The complete suspension halted local price discovery across critical agricultural indices including chana, mustard, and soybean complex derivatives. Spot market participants had to rely on previous settlement figures, which marginally increased cash basis spreads in physical mandis across northern and western trading hubs. [Economic Times](#)

**Indian Railway Finance Corporation Limited** NSE Clearing Limited formalized the strict settlement calendar framework on June 25, 2026, to process the massive volumes originating from the institutional Offer for Sale (OFS) of the railway finance enterprise. The clearing corporation's operational blueprint sets clear margin collection and share allocation timelines to guarantee seamless institutional settlement without causing localized liquidity squeezes. The underlying cash stock is trading under close technical scrutiny as the market absorbs the additional equity float. [NSE Clearing](#)

**ICICI Prudential Asset Management Company** Senior fund management executives issued an investment strategy note on June 26, 2026, explicitly recommending that institutional and retail portfolios shift away from rigid, static asset weightings in favor of flexible, multi-asset allocation frameworks over the next three-year horizon. The asset manager highlighted that global liquidity flows are tapering and corporate earnings delivery will replace multiple expansion as the primary engine for capital appreciation. The tactical advisory recommends a defensive tilt toward large-cap value names paired with active fixed-income duration strategies. [SIAM India](#)

**Kalyani Steels** A historical earnings performance review published on June 26, 2026, highlighted that the company's robust structural revenue expansion has efficiently driven bottom-line profitability over recent trailing periods. The margin trajectory has benefited immensely from an optimized raw material sourcing mix and strong captive power utilization, shielding the company from global coking coal volatility. Equity research

desks maintain a positive mid-term outlook, citing potential tailwinds from ongoing domestic infrastructure and capital goods manufacturing expansions. [SIAM India](#)

## SECTION 2: CORPORATE ANNOUNCEMENTS

**ICICI Prudential Life Insurance Company / Board Meeting Intimation** The company submitted a formal corporate filing to the exchanges on June 26, 2026, intimating that a board of directors meeting is officially scheduled for July 15, 2026. The board will primarily review, deliberate, and approve the un-audited financial results for the first quarter ending June 30, 2026, and evaluate operational metrics including New Business Premium growth and Value of New Business margins. [Official Filing](#)

**ICICI Lombard General Insurance Company / Financial Results & Board Intimation** The general insurance provider filed an official disclosure on June 26, 2026, confirming that its board of directors will convene on July 17, 2026, to formally take on record the company's financial performance for Q1 FY27. Key metrics under evaluation will include the combined ratio, underwriting profitability across motor and health lines, and total investment income generated during the quarter. [Official Filing](#)

**SBFC Finance / Financial Results Notification** The non-banking financial company issued an exchange disclosure on June 26, 2026, notifying the market that its board meeting has been designated for July 25, 2026, to evaluate and approve quarterly financial statements. The market will closely monitor its asset quality trends, specifically Gross Non-Performing Assets and net interest margins across its core MSME lending portfolios. [Official Filing](#)

**Nuvoco Vistas Corporation / Board Meeting for Q1 Results** The cement manufacturing enterprise formally updated the stock exchanges on June 26, 2026, scheduling its upcoming board meeting for July 13, 2026, to assess quarterly operational and financial results. Deliberations are expected to focus heavily on volume growth, regional pricing dynamics across eastern markets, and the impact of input cost inflation on per-ton EBITDA margins. [Official Filing](#)

**Star Health and Allied Insurance Company / Board Meeting Disclosure** The standalone health insurer filed an official intimation on June 26, 2026, stating that its board of directors is slated to meet on July 29, 2026, to consider and approve financial statements for the quarter ending June 30, 2026. The announcement is structurally significant as analysts track retail health premium growth trends and claim settlement ratios post-regulatory policy changes. [Official Filing](#)

**Computer Age Management Services / Financial Results & Dividend Intimation** The financial infrastructure provider notified the exchanges on June 26, 2026, that a meeting of its board is fixed for August 3, 2026, to deliberate on un-audited financial performance and evaluate an interim dividend payout. The announcement directly bears on institutional positioning as investors assess mutual fund asset-under-management service revenue trajectories. [Official Filing](#)

**Esab India / Board Intimation for Financial Disclosures** The welding and cutting products manufacturer issued a regulatory filing on June 26, 2026, stating that its board meeting is scheduled for August 11, 2026, to review corporate financial statements. The strategic update will help long-term investors track heavy industrial demand trends and infrastructure capital goods consumption patterns. [Official Filing](#)

**A2Z Infra Engineering / Corporate Board Convening** The infrastructure services company submitted an official dispatch on June 26, 2026, informing the stock exchanges that its board will meet early on July 3, 2026. The

agenda includes critical reviews of ongoing debt resolution frameworks, project execution timelines, and compliance matters related to working capital management. [Official Filing](#)

### SECTION 3: MACRO / NON-STOCK NEWS

**Goldman Sachs Raised India GDP Growth Forecast to 6.8% After US-Iran Peace Pact** In a comprehensive macro-assessment note titled "India: Improved macro outlook after the US-Iran deal" released on June 26, 2026, Goldman Sachs upgraded India's calendar year 2026 GDP growth projection by 30 basis points to 6.8% year-on-year, up from 6.5% previously. The investment bank cited the historic US-Iran peace deal as a structural game-changer that has sharply pulled down global Brent crude prices, substantially easing India's import bill and reducing structural supply-chain headwinds. First-quarter CY26 real GDP outperformance at 7.8% year-on-year—supported by resilient industrial capital expenditure and robust services momentum—further underpinned the upgrade, prompting an upward revision of FY27 growth to 6.5%. [Economic Times](#)

**India Headline Inflation Projections Lowered to 4.4% on Easing Crude Pressures** Consequent to the downward revision in global energy paths where crude oil is modeled to average \$82 per barrel in H2 CY26 and drop to \$75 in CY27, Goldman Sachs lowered India's headline retail inflation forecast by 20 basis points to 4.4% year-on-year on June 26, 2026. The cooling energy complex significantly curtails the immediate necessity for oil marketing companies to execute domestic fuel price hikes, limiting input-cost pass-through across manufacturing and core logistics networks. While short-term monsoon and weather-related food dependencies remain key variables, the macro consensus points toward an easing trajectory that could provide the RBI with comfortable headroom to reconsider its restrictive monetary stance later in the fiscal cycle. [Economic Times](#)

**Current Account Deficit Forecast Trimmed to 1.1% of GDP Amid Oil Correction** Macroeconomic data compiled on June 26, 2026, indicates a substantial strengthening of India's external sector balancing as Goldman Sachs cut the nation's CY26 Current Account Deficit (CAD) target by 0.2 percentage points to 1.1% of GDP. This structural improvement is fundamentally supported by lower dollar outflows for petroleum imports alongside exceptionally robust, sticky software export flows and resilient non-resident inward remittances. Backed by these shifting terms of trade, the global brokerage now projects an overall Balance of Payments surplus of 0.7% of GDP for the calendar year, which will continue to shore up the Reserve Bank of India's foreign exchange reserves and insulate the rupee from sudden global capital outflows. [Bloomberg](#)

**Global Urea Softening Set to Substantially Reduce Government Fertilizer Subsidy Pressures** Global commodity market intelligence reports disseminated on June 26, 2026, reveal a sharp structural correction in international urea and fertilizer complex pricing post the easing of geopolitical supply channels. Goldman Sachs emphasized that this price drop significantly lowers the fiscal upside risks to the Indian government's heavy agricultural subsidy allocations, which previously faced severe strain during the height of energy supply disruptions. The combined reduction in petroleum and fertilizer support payouts relieves pressure on the fiscal arithmetic, allowing the central government to maintain its strict path of fiscal deficit consolidation without compromising on targeted infrastructure capital outlays. [Economic Times](#)

**Indian Equity Markets Observe Trading Holiday for Muharram; Trading Halts Across Segments** The National Stock Exchange (NSE) and Bombay Stock Exchange (BSE) suspended all regular cash equity, equity derivatives, currency derivatives, and securities lending segments on Friday, June 26, 2026, in observance of Muharram. The scheduled market closure provided market participants with an extended three-day weekend to absorb the structural global macro shifts following the US-Iran peace accords. Regular, full-scale institutional price

discovery will resume on Monday, June 29, 2026, with traders actively tracking technical support levels on the Nifty 50 and shifts in the India VIX volatility index after the trading pause. [Bloomberg](#)

**Exchange Clearing Corporations Issue Process Frameworks for New TDS Refund Portal** NSE Clearing Limited rolled out an official compliance circular on June 25, 2026, announcing the immediate release of an automated portal designed specifically for claiming Tax Deduction at Source (TDS) refunds based on direct challan and certificate uploads. The automated clearing workflow removes manual processing backlogs and improves operational capital deployment efficiency for trading members and institutional clearing desks. This structural regulatory optimization is part of a broader push by market intermediaries to institutionalize seamless tax tracking setups and minimize idle working margins across the cash segment. [NSE India](#)

**Risk Management Frameworks Enhanced for Equity Closing Auction Session** In a strategic market microstructure update issued on June 25, 2026, NSE Clearing Limited updated its risk management parameters for the Closing Auction Session (CAS) within the equity cash segment. The new clearing mandates impose stricter pre-trade risk checks and real-time collateral validation rules to prevent abrupt end-of-day price manipulation and excessive volatility spikes during institutional portfolio rebalancing hours. Quantitative desks are recalibrating their closing order execution algorithms to avoid order rejections under the newly tightened settlement protocols when trading resumes. [NSE India](#)

**NSE Clearing Revises Collateral Allocation Timing Windows Across F&O and Currency Segments** Regulatory operational mandates released on June 25, 2026, confirmed a structural modification in daily timing windows for collateral allocation across the Futures and Options, Currency Derivatives, and Securities Lending schemes. The synchronized timing adjustments are specifically engineered to align early pay-in benefits with multi-asset collateral haircuts, giving clearing members better intra-day capital optimization and liquidity management capabilities. Brokerages must integrate these altered cut-off schedules into their back-office ledger architectures to prevent technical margin penalties during high-volume clearings. [NSE India](#)

**EI Nino Drought Pressures Crop Yields; Ethanol Blending Policy Targets Face Grain Constraints** Agricultural monitoring data analyzed on June 27, 2026, confirms that extended El Nino-induced drought conditions have severely reduced domestic barley and feed-grain yields across major cultivating states. The structural grain shortage is forcing policymakers to evaluate shifting more ethanol production loads onto rice-based feedstocks to meet India's ambitious E20 fuel blending mandates for the 2025-26 cycle. Sugar and distillery industries are closely monitoring central allocation policies, as any food-security restrictions on grain diversion could impact distillery utilization rates and alter short-term operating profit margins. [India IPO Daily](#)

**India Portfolio Management Services Witness Third Consecutive Month of Client Contractions** Industry asset data released for the period ending June 27, 2026, shows that India's premium Portfolio Management Services (PMS) industry lost a net 310 high-net-worth clients during the previous month, marking three consecutive periods of customer contraction. Wealth managers attribute the client attrition to heightened market volatility and a tactical shift by affluent domestic investors away from high-fee discretionary mandates into passive index funds and low-cost multi-asset strategies. The trend highlights cooling retail euphoria in specialized small-and-midcap PMS strategies as alpha generation becomes increasingly difficult in a fully-valued market environment. [India IPO Daily](#)

**RBI Expands State Development Loan Benchmark Strategy to Ten Additional Jurisdictions** The Reserve Bank of India implemented a structural monetary expansion on June 27, 2026, broadening its State Development Loan (SDL) Benchmark Issuance Strategy to ten additional jurisdictions, bringing total state and union territory participation to nineteen. The institutional framework is specifically designed to pool fragmented state debt issuances into larger, standardized liquid tranches, effectively lowering borrowing costs and enhancing

secondary market liquidity. Fixed-income asset managers welcome the transparency boost, noting it will help institutional treasuries accurately value sub-sovereign risk spreads against central government securities. [RBI](#)

**MSME Support Architecture Overhauled in Budget 2026 via Three-Pronged Capital Delivery** Public policy updates reviewed on June 27, 2026, outline the rollout of a comprehensive three-pronged MSME support framework launched under the latest budget directives, prioritizing equity injections, structural liquidity windows, and professional compliance assistance. The professional institutes (ICAI, ICSI, and ICWA) have co-designed specialized modular training courses to build a professional pool of para-professionals capable of managing streamlined tax filings for small business clusters. Additionally, a simplified TDS mechanism for manpower supply services has been put in motion, eliminating crippling working capital lock-ups for small-scale labor contractors. [India IPO Daily](#)

**Corporate Dollar-Bond Issuances Stall Amid Intense US Interest Rate Policy Uncertainty** International debt capital market reports published on June 27, 2026, indicate a significant slowdown in overseas dollar-denominated bond issuances by large Indian corporate borrowers. Emerging market issuers are actively pausing scheduled debt placements as global institutional investors demand significantly higher yields to offset ongoing US Federal Reserve interest rate policy uncertainty and global currency market volatility. This cross-border borrowing friction is forcing highly-rated domestic corporations to pivot back toward domestic credit markets, driving corporate bond issuance volumes higher across local commercial banking syndicates. [Bloomberg](#)

**Government Solicits Corporate Bids for Green Urea Production Facilities Under Special Fund** The Ministry of Chemicals and Fertilizers opened formal corporate bidding rounds on June 27, 2026, for setting up advanced green urea manufacturing plants under a massive ₹19,020 crore central incentive scheme. The macro policy target aims to build out 10 million tons of domestic green urea capacity by 2030, effectively slashing India's crippling ₹1.5 lakh crore annual fertilizer import bill and accelerating investments in ammonia-based green hydrogen production. Capital goods providers and engineering syndicates are positioning to capture massive technology procurement contracts as bidding activity steps up. [Economic Times](#)

**Direct India-China Aviation Traffic Capacities Scale 30-Fold to Near Historical Highs** Civil aviation statistics compiled for the month ending June 27, 2026, show that direct flight passenger and cargo capacity between India and China expanded a massive 30-fold since October 2025, with airlines positioning 27,857 seats across 137 scheduled flights in June alone. The rapid restoration of bilateral commercial aviation links removes severe bottlenecks for manufacturing supply chains, allowing electronic components, active pharmaceutical ingredients, and machinery spares to move at lower freight rates. Logistics analysts indicate this logistical normalization will ease short-term input cost pressures for manufacturing sectors across western and southern industrial hubs. [India IPO Daily](#)

**India's Inaugural Hydrogen-Powered Passenger Train Commences Crucial Safety Trials in Haryana** Ministry of Railways technical teams confirmed on June 27, 2026, that India's first indigenously developed hydrogen-powered passenger train has successfully entered advanced track safety and speed verification trials along the Haryana rail corridor. The tech milestone marks a critical structural step forward in the country's multi-decade macro shift toward green public transportation infrastructure and net-zero emissions targets. Engineering majors involved in alternative fuel systems stand to gain substantial long-term rolling stock modification contracts as the government prepares to build out hydrogen networks on high-density suburban corridors. [India IPO Daily](#)

**Commercial Vehicle Commercial Sector Projections Moderate to 4-6% Growth for FY27** Credit rating agency ICRA issued an industrial update on June 27, 2026, projecting that India's commercial vehicle volume growth

will ease to a moderate 4–6% range during fiscal year 2027. The anticipated cooling represents a structural normalization of fleet demand following multiple consecutive fiscal periods of heavy post-pandemic fleet expansion and aggressive infrastructure building. Fleet operators are currently focusing on improving truck utilization metrics and optimizing fuel economics rather than placing aggressive new orders, which will temporarily flatten revenue expansion curves for major domestic automotive OEMs. [India IPO Daily](#)

### **India Solars Cumulative Capacity Surpasses 150 GW; Solidifies Status as Second Largest Global Market**

Renewable energy grid statistics validated on June 27, 2026, confirm that India's total operational solar photovoltaic capacity has officially crossed the 150 GW milestone, cementing its position as the world's second-largest solar market. The rapid capacity addition has been heavily supported by utility-scale solar parks across Rajasthan and Gujarat alongside a structural acceleration in commercial and industrial rooftop solar mandates. Institutional utilities are shifting capital allocations toward green energy assets to comply with toughened ESG investment rules and clean power purchase obligations. [India IPO Daily](#)

### **Global AI Infrastructure Rush Scales Up via Samsung's Substantial Long-Term Spending Capital**

International technology expenditure reports published on June 27, 2026, reveal that Samsung Group has unveiled a staggering \$646 billion capital spending package spanning the next ten years, specifically targeting high-performance AI data centers, next-generation logic chips, advanced batteries, and display architectures. With SK Hynix joining this massive AI investment push, global component and semiconductor supply chains are tightening to fulfill extreme infrastructure build-outs. Indian IT service providers with deep expertise in enterprise AI engineering stand to win significant long-term offshore development contracts as these tech giants deploy their capital. [Bloomberg](#)

**SoftBank Group Shares Face Equity Sell-Off Amid Rumored OpenAI IPO Delays** Asian technology markets witnessed intense selling pressure on June 27, 2026, as SoftBank Group equity plunged 13% following reports that OpenAI may delay its highly anticipated initial public offering to 2027 due to tech sector volatility and massive \$1 trillion valuation pushback. The sell-off triggered a broader correction across high-multiple AI tech proxies, dragging Arm Holdings and regional semiconductor equipment suppliers down with it. Indian tech funds and high-beta digital platform operators are bracing for localized sentiment spillover as domestic tech valuations undergo reality checks against changing global venture capital timelines. [Bloomberg](#)

**Port Cargo Traffic Growth Touches Four-Month Highs Reflecting Strong Global Trade Resiliency** National logistical data highlighted within macroeconomic updates on June 26, 2026, reveals that cargo traffic volume growth across India's major ports reached a four-month high, underscoring resilient merchandise export-import dynamics. The acceleration in cargo movement reflects a seasonal pickup in manufacturing raw materials alongside elevated outbound shipments of engineering goods and chemical products to Western markets. Port operational metrics indicate an improvement in turnaround times, helping major coastal shipping infrastructure players sustain higher capacity utilization levels moving into the second quarter. [Economic Times](#)

**Fintech Sector Attracts Renewed Regulatory Checks via Unified KYC Master Directions** The Reserve Bank of India issued an updated compliance manual for digital payment intermediaries on June 26, 2026, implementing tighter customer onboarding mandates and strict periodic verification algorithms. The revised framework requires non-bank fintech apps to run multi-layered identity validations and immediate biometric or electronic registries to prevent digital transaction fraud. Industry insiders note that while compliance overheads will spike by 12–15% in the short term, the structured parameters will isolate system-wide operational risks and restore long-term institutional investor confidence in domestic payment platforms. [RBI](#)

**Corporate Tax Collection Trajectory Hits Record Target Highs in Initial FY27 Advance Tranches** Revenue department disclosures finalized on June 26, 2026, indicate that initial advance tax collection tranches for the

corporate segment registered a healthy 14.5% year-on-year expansion, outpacing standard budgetary projections. The revenue traction is fundamentally supported by strong corporate earnings across the domestic banking, automobile, and heavy engineering segments. Financial analysts emphasize that this direct tax expansion gives the fiscal managers comfortable capital leeway to finance capital expenditure allocations without deviating from their stated fiscal glide path target of 4.5% or lower. [Economic Times](#)

**NSE India Introduces Weekly Options Contracts for Newly Tracked Sectoral Indices** The National Stock Exchange rolled out an official derivatives circular on June 25, 2026, confirming the launch of new weekly options contracts tied to thematic and mid-cap indices starting next settlement block. The structural expansion of derivatives products is designed to cater to rising institutional and proprietary quantitative trading desks looking for precise sectoral hedging mechanisms. Exchange brokers project that the introduction of these contracts will shift short-term options volumes from traditional broad market indices, altering the overall open interest concentration profile across high-beta segments. [NSE India](#)

**Real Estate Inventory Lifecycles Contract Across Tier-1 Cities on Premium Housing Absorption** Housing market data released by institutional research firms on June 26, 2026, reveals that the aggregate residential inventory liquidation lifecycle across India's top seven cities dropped to an average of 14 months, down from 22 months a year earlier. The structural compression is driven by a pronounced demand skew toward luxury and premium residential spaces priced above ₹1.5 crore, which continue to find high absorption among affluent buyers. The rapid sales velocity has strengthened developer cash flows, leading to a notable reduction in sector-wide leverage and enabling immediate capital reinvestment into fresh phase launches. [Economic Times](#)

**Steel Consumption Trajectory Scales up on Accelerated Domestic Capital Infrastructure Builds** Ministry of Steel data points published on June 27, 2026, show that India's domestic finished steel consumption expanded 11.2% year-on-year in the trailing quarter, supported by sustained capital outlays in railways, metro networks, and national highway corridors. While domestic demand remains structurally sound, profit margins are facing minor headwinds from cheap steel imports originating from surplus Asian manufacturing hubs. Industry bodies are lobbying the Ministry of Finance for the immediate imposition of targeted anti-dumping duties to protect local capacity expansions and safeguard domestic capital returns. [India IPO Daily](#)

**Mutual Fund Industry SIP Inflows Cross Key Milestone of ₹25,000 Crore Per Month** Association of Mutual Funds in India (AMFI) operational statistics validated for the latest monthly closing on June 26, 2026, confirm that aggregate Systematic Investment Plan (SIP) inflows crossed the historic threshold of ₹25,000 crore. The steady influx of domestic retail capital highlights deep financialization across tier-2 and tier-3 locations, providing the domestic equity market with a structural cushion against volatile foreign institutional selling waves. Fund houses are allocating these consistent inflows primarily toward large-cap value and diversified multi-asset schemes to manage structural risk parameters. [Economic Times](#)

**Telecom Infrastructure Upgrades Accelerate as Fixed Wireless Access Subscriptions Double**

Telecommunication regulatory reports published on June 26, 2026, show that Fixed Wireless Access (FWA) subscriptions across urban and semi-urban clusters have doubled over the past two quarters, emerging as a major monetization driver for top telecom service providers. The rapid uptake of high-speed wireless home broadband has driven a significant increase in data traffic per subscriber, forcing telecom operators to ramp up fiber backhaul rollouts and small-cell installations. Market analysts predict that FWA monetization will act as the primary catalyst for lifting industry Average Revenue Per User (ARPU) metrics over the next fiscal year.

[Bloomberg](#)

**Power Demand Trajectory Remains Near All-Time Highs Sparking Heavy Grid Capacity Additions** Central Electricity Authority operational briefs compiled on June 26, 2026, confirm that peak domestic power demand remained near record levels due to sustained industrial manufacturing activity and intense seasonal cooling loads. To manage the growing base-load requirement, the Ministry of Power has fast-tracked approvals for 12 GW of fresh thermal capacity expansions alongside renewable integration projects. The continued tight demand-supply dynamic has kept spot power prices on the Indian Energy Exchange (IEX) elevated, boosting cash generation profiles for merchant power producers. [Economic Times](#)

**Private Equity Inflows into Domestic Tech Ecosystem Pick Up Pace via Late-Stage Capital Deals** Venture intelligence data compiled for the week ending June 27, 2026, indicates a distinct revival in late-stage private equity funding rounds across the domestic enterprise SaaS and deep-tech verticals, with total capital commitments crossing \$850 million. Global institutional funds are demonstrating a clear preference for business models that show a clear path to profitability and positive operational cash flows over pure customer acquisition metrics. Investment bankers note that this capital return will support healthy pre-IPO capital structures, paving the way for fresh tech public listings on the mainboard exchanges in early 2027. [India IPO Daily](#)

**Disclosures and Disclaimer**

Ventura Securities Limited (VSL) is a SEBI registered intermediary offering broking, depository and portfolio management services to clients. VSL is member of BSE, NSE and MCX-SX. VSL is a depository participant of NSDL. VSL states that no disciplinary action whatsoever has been taken by SEBI against it in last five years except administrative warning issued in connection with technical and venial lapses observed while inspection of books of accounts and records. Ventura Commodities Limited, Ventura Guaranty Limited, Ventura Insurance Brokers Limited and Ventura Allied Services Private Limited are associates of VSL. Research Analyst (RA) involved in the preparation of this research report and VSL disclose that neither RA nor VSL nor its associates (i) have any financial interest in the company which is the subject matter of this research report (ii) holds ownership of one percent or more in the securities of subject company (iii) have any material conflict of interest at the time of publication of this research report (iv) have received any compensation from the subject company in the past twelve months (v) have managed or co-managed public offering of securities for the subject company in past twelve months (vi) have received any compensation for investment banking merchant banking or brokerage services from the subject company in the past twelve months (vii) have received any compensation for product or services from the subject company in the past twelve months (viii) have received any compensation or other benefits from the subject company or third party in connection with the research report. RA involved in the preparation of this research report discloses that he / she has not served as an officer, director or employee of the subject company. RA involved in the preparation of this research report and VSL discloses that they have not been engaged in the market making activity for the subject company. Our sales people, dealers, traders and other professionals may provide oral or written market commentary or trading strategies to our clients that reflect opinions that are contrary to the opinions expressed herein. We may have earlier issued or may issue in future reports on the companies covered herein with recommendations/ information inconsistent or different those made in this report. In reviewing this document, you should be aware that any or all of the foregoing, among other things, may give rise to or potential conflicts of interest. We may rely on information barriers, such as "Chinese Walls" to control the flow of information contained in one or more areas within us, or other areas, units, groups or affiliates of VSL. This report is for information purposes only and this document/material should not be construed as an offer to sell or the solicitation of an offer to buy, purchase or subscribe to any securities, and neither this document nor anything contained herein shall form the basis of or be relied upon in connection with any contract or commitment whatsoever. This document does not solicit any action based on the material contained herein. It is for the general information of the clients / prospective clients of VSL. VSL will not treat recipients as clients by virtue of their receiving this report. It does not constitute a personal recommendation or take into account the particular investment objectives, financial situations, or needs of clients / prospective clients. Similarly, this document does not have regard to the specific investment objectives, financial situation/circumstances and the particular needs of any specific person who may receive this document. The securities discussed in this report may not be suitable for all investors. The appropriateness of a particular investment or strategy will depend on an investor's individual circumstances and objectives. Persons who may receive this document should consider and independently evaluate whether it is suitable for his/ her/their particular circumstances and, if necessary, seek professional/financial advice. And such person shall be responsible for conducting his/her/their own investigation and analysis of the information contained or referred to in this document and of evaluating the merits and risks involved in the securities forming the subject matter of this document. The projections and forecasts described in this report were based upon a number of estimates and assumptions and are inherently subject to significant uncertainties and contingencies. Projections and forecasts are necessarily speculative in nature, and it can be expected that one or more of the estimates on which the projections and forecasts were based will not materialize or will vary significantly from actual results, and such variances will likely increase over time. All projections and forecasts described in this report have been prepared solely by the authors of this report independently of the Company. These projections and forecasts were not prepared with a view toward compliance with published guidelines or generally accepted accounting principles. No independent accountants have expressed an opinion or any other form of assurance on these projections or forecasts. You should not regard the inclusion of the projections and forecasts described herein as a representation or warranty by VSL, its associates, the authors of this report or any other person that these projections or forecasts or their underlying assumptions will be achieved. For these reasons, you should only consider the projections and forecasts described in this report after carefully evaluating all of the information in this report, including the assumptions underlying such projections and forecasts. The price and value of the investments referred to in this document/material and the income from them may go down as well as up, and investors may realize losses on any investments. Past performance is not a guide for future performance. Future returns are not guaranteed and a loss of original capital may occur. Actual results may differ materially from those set forth in projections. Forward-looking statements are not predictions and may be subject to change without notice. We do not provide tax advice to our clients, and all investors are strongly advised to consult regarding any potential investment. VSL, the RA involved in the preparation of this research report and its associates accept no liabilities for any loss or damage of any kind arising out of the use of this report. This report/document has been prepared by VSL, based upon information available to the public and sources, believed to be reliable. No representation or warranty, express or implied is made that it is accurate or complete. VSL has reviewed the report and, in so far as it includes current or historical information, it is believed to be reliable, although its accuracy and completeness cannot be guaranteed. The opinions expressed in this document/material are subject to change without notice and have no obligation to tell you when opinions or information in this report change. This report or recommendations or information contained herein do/does not constitute or purport to constitute investment advice in publicly accessible media and should not be reproduced, transmitted or published by the recipient. The report is for the use and consumption of the recipient only. This publication may not be distributed to the public used by the public media without the express written consent of VSL. This report or any portion hereof may not be printed, sold or distributed without the written consent of VSL. This document does not constitute an offer or invitation to subscribe for or purchase or deal in any securities and neither this document nor anything contained herein shall form the basis of any contract or commitment whatsoever. This document is strictly confidential and is being furnished to you solely for your information, may not be distributed to the press or other media and may not be reproduced or redistributed to any other person. The opinions and projections expressed herein are entirely those of the author and are given as part of the normal research activity of VSL and are given as of this date and are subject to change without notice. Any opinion estimate or projection herein constitutes a view as of the date of this report and there can be no assurance that future results or events will be consistent with any such opinions, estimate or projection. This document has not been prepared by or in conjunction with or on behalf of or at the instigation of, or by arrangement with the company or any of its directors or any other person. Information in this document must not be relied upon as having been authorized or approved by the company or its directors or any other person. Any opinions and projections contained herein are entirely those of the authors. None of the company or its directors or any other person accepts any liability whatsoever for any loss arising from any use of this document or its contents or otherwise arising in connection therewith. The information contained herein is not intended for publication or distribution or circulation in any manner whatsoever and any unauthorized reading, dissemination, distribution or copying of this communication is prohibited unless otherwise expressly authorized. Please ensure that you have read "Risk Disclosure Document for Capital Market and Derivatives Segments" as prescribed by Securities and Exchange Board of India before investing in Securities Market.

**Ventura Securities Limited - SEBI Registration No.: INH000001634**

*Corporate Office: I-Think Techno Campus, 8<sup>th</sup> Floor, 'B' Wing, Off Pokhran Road No 2, Eastern Express Highway, Thane (W) - 400608*